

CERTIFICATE OF LOCATION OF GOVERNMENT CORNER

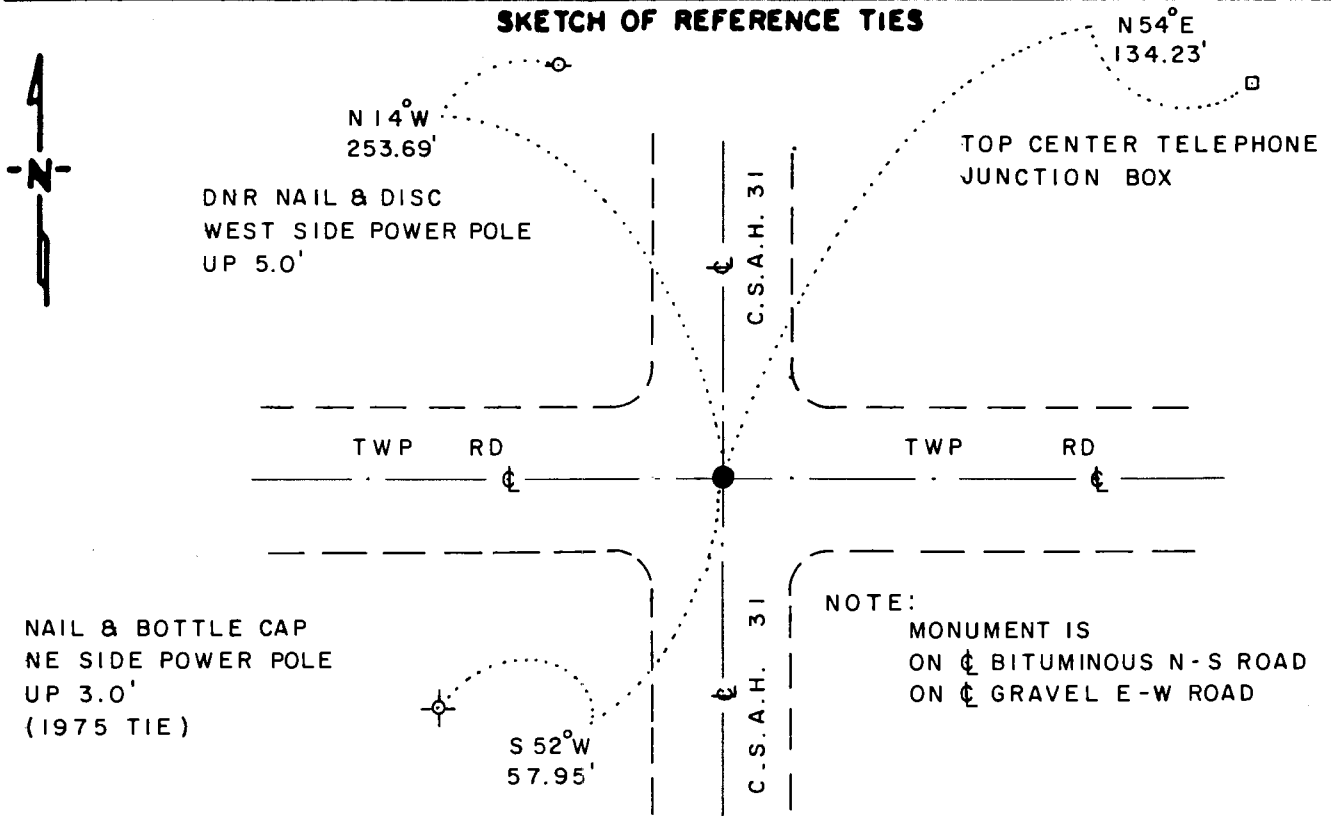
NORTHEAST Corner of Section 20, Township 105 N, Range 41 W, 5th P.M.

STATE OF MINNESOTA, County of MURRAY

At the corner location shown on the sketch

- On 3-21-90 found a 5/8" x 9" IRON ROD, DOWN 0.1', OVER A 6" x 6" SQUARE CONCRETE MONUMENT WITH "X" ON TOP, DOWN 14"
 left monument as found, lowered monument, removed monument (explain)
- On 3-21-90 placed a 3/4" x 12" REBAR WITH ALUMINUM CAP STAMPED "DNR SURVEY MARKER", OVER CONCRETE MONUMENT, DOWN 0.2'

SKETCH OF REFERENCE TIES



NOTE:
 MONUMENT IS
 ON ϕ BITUMINOUS N-S ROAD
 ON ϕ GRAVEL E-W ROAD

1983 MURRAY COUNTY
 COORDINATE SYSTEM
 N = 116049.557
 E = 495399.945

BEARINGS OBSERVED WITH COMPASS

Statement of evidence relative to this corner location is on back of page

J.B.M. 4-25-90
 WMA 1488

I hereby certify that this document and the data contained herein was prepared by me or under my direct supervision.

Louell R. Pommeroy Jr. 5-10-90
SIGNATURE DATE

Registration No. 17005

- Land Surveyor, Professional Engineer
- County Surveyor, County Engineer

OFFICE OF THE COUNTY RECORDER
 County of _____

I hereby certify that this document was filed in the Co. Recorders office at _____ M. on the _____ day of MAY 16 1990 A.D., 19 _____

County Recorder *James V. Johnson*

By _____, Deputy

DOCUMENT NO. _____

Northeast Corner of Section 20, Township 105 North, Range 41 West

The DNR Bureau of Engineering contacted the following for survey information:

Secretary of State's Office
Murray County Recorder's Office
Murray County Highway Engineer's Office
Bell Surveying, Inc., of Worthington
Madsen Land Surveying of Fairmont

- 1861 U.S. General Land Office notes obtained from the Secretary of State's Office show corner marked with a post in a mound with trench and pits as per instructions.
- 1898 Surveyor's Record Book A, page 76, obtained from the County Recorder's Office contains a survey by J. W. Woolstencroft. Survey shows corner but does not indicate what was found or set. The corner is shown:
40.07 chains (2644.62') from the north quarter corner of Section 21
- 1975 Government Corner Tie Book obtained from the County Highway Engineer's Office shows that a concrete monument was found down 3 inches at corner. A steel pin was set over the concrete monument and the following ties were taken:
nail and cap in power pole, southwest, 58.17 feet
reds in township road west 100 feet, 200 feet, 300 feet
- No Date Field notes obtained from Bell Surveying, Inc., surveyed by Timothy Bell, RLS #16093, show that a 1 inch iron pin was found at corner. The corner is shown:
at the surface of C.S.A.H. 31
2645.45 feet from the north quarter corner of Section 21
- 1975 Construction Plan Sheet No. 9 of 33 for County State Aid Highway No. 31, obtained from the County Highway Engineer's Office shows that a concrete monument was found down 13 inches at corner. A 1/2 inch diameter rebar was set over the concrete monument in existing bituminous surface. The corner is shown:
at Station 152+68.21
at the intersection of roads north, south, east and west
2645.99 feet from the east quarter corner of Section 17
- 1990 March, DNR Bureau of Engineering found a 5/8 inch diameter by 9 inch long iron rod at corner. Removed the iron rod and found a 6" by 6" concrete monument with an "X" on top down 14 inches. Discarded the found iron rod and set a DNR Survey Marker over the concrete monument. Searched for and found record ties as shown on sketch of reference ties. The concrete monument was found to be:
at intersection of roads north, south, east and west
2645.90 feet from the north quarter corner of Section 21
2645.51 feet from the east quarter corner of Section 17

Analysis of the above information led the DNR Bureau of Engineering to conclude that the found concrete monument marks the location of the corner.